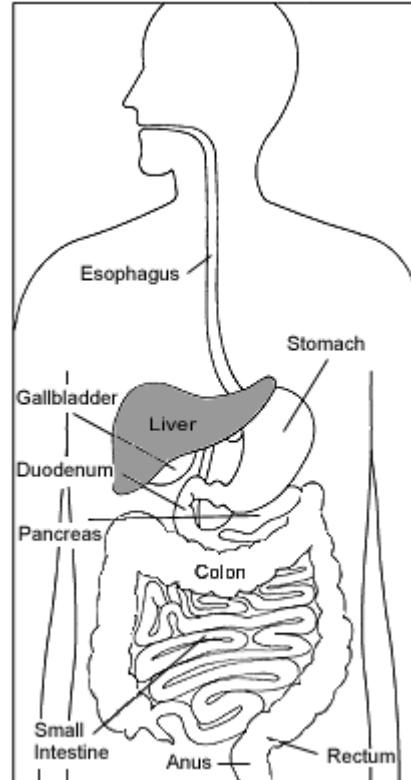

PEDIATRIC G.I. LIVER BIOPSY



This brochure provides much of the information you should know about liver biopsy. Please read it over carefully and if you have any questions, our staff is happy to respond. At Center for Children's Digestive Health, we are committed to providing you personalized, compassionate care.

WHAT IS A LIVER BIOPSY?

In a liver biopsy the physician examines a small piece of tissue from your liver for signs of damage or disease. A special needle is used to remove the tissue from the liver. Ultrasound images of the abdomen can locate the precise area to be biopsied. The physician decides to do a liver biopsy after tests suggest that the liver may not be working properly. For example, a blood test might show that your blood contains higher than normal levels of liver enzymes. An x-ray could suggest that the liver is swollen. Tissue samples for biopsies can be obtained from the liver. This tissue sample is viewed by a pathologist in diagnosing certain diseases. Looking at liver tissue itself is the best way to determine whether the liver is healthy or what is causing it to be damaged.

WHAT ELSE SHOULD I KNOW?

Our group rotates all four physicians in the operating room. **Therefore you may see one doctor in the office and another may perform the actual procedure.** The doctor who you saw in the office will interpret biopsy results and follow your child's care after the procedure if needed at the office visit. Be assured the doctor performing the test will have the chart for review prior to the test.

PREPARATION FOR THE PROCEDURE

After scheduling your biopsy, the patient is required to have bloodwork done no more than 3 days prior to the procedure. This ensures your blood clots properly. Be sure to mention any medications you take, especially those that affect blood clotting, like aspirin or seizure medications. One week before the procedure, you will have to stop taking aspirin, ibuprofen, and other anticoagulants.

Your child must not eat or drink anything from midnight until the procedure is over. Nevertheless, if it is a late afternoon procedure, no food or drink 6 hours before the scheduled procedure time (you will receive a call the evening before the tests with specific info). If your child is taking any medications, the doctor will advise you which ones may be administered.

YOUR CHILD'S COMFORT AND SAFETY ARE IMPORTANT

We understand that a medical procedure can be scary for your child. It is important for everyone to know that your child will be completely asleep for this procedure and will not feel any pain. Our staff is specially trained to help children deal with the anxiety of the procedure and the hospital environment. During the procedure medications will be given intravenously (through an IV) to help your child relax and be free of any discomfort. Your child will be closely monitored to ensure safety. A specially trained physician (a pediatric anesthesiologist) will administer these medications to your child while the GI doctor performs the procedure. The type of medications to be used will be discussed with you prior to the procedure. If you have any

questions about the procedure please do not hesitate to ask.

THE DAY OF THE PROCEDURE

Please plan to arrive at the hospital one hour prior to the scheduled procedure time. This allows time for nursing assessment as well as the opportunity to meet with the Gastroenterologist and anesthesiologist. More importantly, it allows us more of an opportunity to make sure that your child is comfortably prepared for the procedure. Registration is located in the GI Lab/Ambulatory Surgery waiting area at the east end of the main hospital.

Parent(s) may stay during the admission process until your child is ready for the procedure, but may not remain in the room during the procedure. This is for safety reasons for both you and your child. The procedure takes 45 minutes.

After the liver biopsy your child will be admitted to the hospital over night for observation. Biopsy results will be available 2 weeks after the procedure and our physician assistant will follow your child's care at the next office visit.

If you have any questions or concerns, please call our office at 847-723-7700.

Your Child

is scheduled for a liver biopsy at

Time

Date

in the Ambulatory Surgery section of Lutheran General Hospital. Please arrive at GI Lab/Ambulatory Surgery Registration 1 hour prior to the scheduled procedure time.

Please note that the time of the procedure may change by either 1-2 hours earlier or 1-2 hours later. Ambulatory surgery will call you the evening before to go over the time and instructions with you.

For your convenience our office will take care of calling your insurance for pre-certification. If you have an insurance that requires a referral, such as a HMO, POS, or MC plan please make sure that a referral is on file for this procedure.

If your insurance changes prior to the liver biopsy please make sure that you provide us with a front and back copy of the insurance card that will be effective during the date of service, otherwise we will not have the necessary information to do the pre-certification or to bill the correct insurance.

Cancellations: If you need to reschedule the procedure for any reason, please notify our office as soon as possible. Please note patients that are scheduled for a surgical procedure (i.e. endoscopy, colonoscopy, etc) must allow at least 3 business days notice of your intent to cancel. Otherwise there will be a late cancellation fee of \$100, which will be your personal responsibility, NOT the insurance company.

Pediatric Surgical Tours

Pediatric patients (ages 3 to 9) scheduled for surgery at Advocate Lutheran General Hospital and their parents can attend a free pediatric surgical tour on alternating Saturday mornings

and Tuesday afternoons. The tour includes a visit to the operating room, a video presentation and the opportunity to meet with surgical nurses to discuss what to expect the day of the surgery. To register, call 1-800-323-8622.

All physicians are board-certified in Pediatric Gastroenterology



Center for Children's Digestive Health

James Berman, MD
Esperanza Garcia, MD
T.S. Gunasekaran, MD
Hector Hernandez, MD
Nicole Zylman, MS, PA-C
Gina Deignan, MS, PA-C

1675 Dempster St.
Park Ridge, IL 60068
Phone 847-723-7700
Fax 847-723-9050