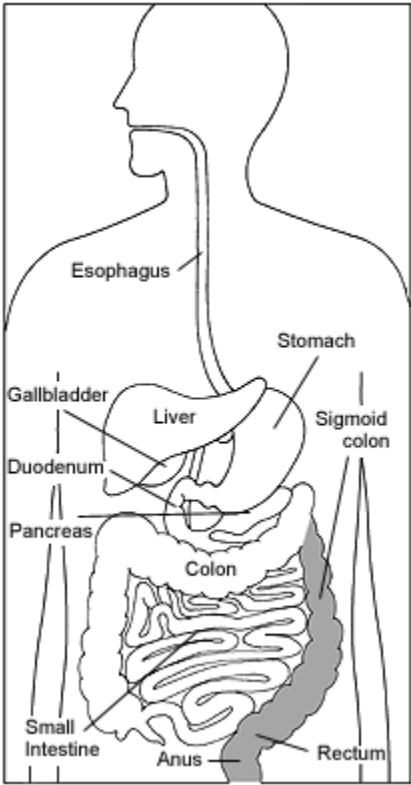


---

# PEDIATRIC G.I. FLEXIBLE SIGMOIDOSCOPY

---



*This brochure provides much of the information you should know about a flexible sigmoidoscopy. Please read it over carefully and if you have any questions, our staff is happy to respond. At Center for Children's Digestive Health, we are committed to providing you personalized, compassionate care.*

## WHAT IS A FLEXIBLE SIGMOIDOSCOPY?

Flexible sigmoidoscopy (SIG-moy-DAH-skuh-pee) enables the physician to look at the inside of the large intestine from the rectum through the last part of the colon, called the sigmoid or descending colon. Physicians may use the procedure to find the cause of diarrhea, abdominal pain, or constipation. With flexible sigmoidoscopy, the physician can see bleeding, inflammation, abnormal growths, and ulcers in the descending colon and rectum.

For the procedure, you will lie on your left side on the examining table. The physician will insert a short, flexible, lighted tube into your rectum and slowly guide it into your colon. The tube is called a sigmoidoscope (sig-MOY-duh-skope). The scope transmits an image of the inside of the rectum and colon, so the physician can carefully examine the lining of these organs. The scope also blows air into these organs, which inflates them and helps the physician see better.

If anything unusual is in your rectum or colon, like a polyp or inflamed tissue, the physician can remove a piece of it using instruments inserted into the scope. The physician will send that piece of tissue (biopsy) to the lab for testing. This tissue sample is then viewed by a pathologist.

## WHAT ELSE SHOULD I KNOW?

Our group rotates all four physicians in the operating room. **Therefore you may see one doctor in the office and another may perform the actual procedure.** Our physician assistant corresponds with all four physicians to interpret biopsy results and follow your child's care after the procedure if needed at the office visit. Be assured the performing doctor will have the chart for review prior to the test.

## PREPARATION FOR THE PROCEDURE

The surgery scheduler will discuss the prep with you prior to the flexible sigmoidoscopy either in the office or on the phone.

## YOUR CHILD'S COMFORT AND SAFETY ARE IMPORTANT

We understand that a medical procedure can be scary for your child. Our staff is specially trained to help children deal with the anxiety of the procedure and the hospital environment. If you have any questions about the procedure please do not hesitate to ask.

## THE DAY OF THE PROCEDURE

Please plan to arrive at the hospital one hour prior to the scheduled procedure time. This allows time for nursing assessment as well as the opportunity to meet with the Gastroenterologist. More importantly, it allows us more of an opportunity to make sure that your child is comfortably prepared for the procedure. Registration is located in the GI Lab/Ambulatory Surgery waiting area at the east end of the main hospital. Parent(s) may stay with the child during the procedure.

The procedure takes 30 minutes.

After the flexible sigmoidoscopy, you are welcome to sit with your child in the recovery area. Your child will remain in the recovery area for approximately one hour. Once your child is sufficiently able to drink, you may leave the hospital. Your child's diet and activity can usually return to normal by the next day. Specific instructions regarding diet, activity and/or medication will be discussed with you before leaving the hospital.

After the procedure the pediatric Gastroenterologist will discuss the preliminary findings with you. Biopsy results will be available 1 week after the procedure and our physician assistant will follow your child's care at the next office visit.

If you have any questions or concerns, please call our office at 847-723-7700.

### Your Child

is scheduled for an flexible sigmoidoscopy at

### Time

### Date

in the Ambulatory Surgery section of Lutheran General Hospital. Please arrive at GI Lab/Ambulatory Surgery Registration 1 hour prior to the scheduled procedure time.

**Please note that the time of the procedure may change by either 1-2 hours earlier or 1-2 hours later. Ambulatory surgery will call you the evening before to go over the time and instructions with you.**

For your convenience our office will take care of calling your insurance for pre-certification. If you have an insurance that requires a referral, such as a HMO, POS, or MC plan please make sure that a referral is on file for this procedure.

If your insurance changes prior to the flexible sigmoidoscopy please make sure that you provide us with a front and back copy of the insurance card that will be effective during the date of service, otherwise we will not have the necessary information to do the pre-certification or to bill the correct insurance.

Cancellations: If you need to reschedule the procedure for any reason, please notify our office as soon as possible. Please note patients that are scheduled for a surgical procedure (i.e. endoscopy, colonoscopy, etc) must allow at least 3 business days notice of your intent to cancel. Otherwise there will be a late cancellation fee of \$100, which will be your personal responsibility, NOT the insurance company

## PEDIATRIC SURGICAL TOURS

Pediatric patients (ages 3 to 9) scheduled for surgery at Advocate Lutheran General Hospital and their parents can attend a free pediatric surgical tour on alternating Saturday mornings and Tuesday afternoons. The tour includes a visit to the operating room, a video presentation and the opportunity to meet with surgical nurses to discuss what to expect the day of the surgery. To register, call 1-800-323-8622.

## Center for Children's Digestive Health



James Berman, MD  
Esperanza Garcia, MD  
T.S. Gunasekaran, MD  
Hector Hernandez, MD  
Gina Deignan, MS, PA-C

1675 Dempster St.  
Park Ridge, IL 60068  
Phone 847-723-7700  
Fax 847-723-9418